

WESTGATE SCIENCE CLUB

issue 3

DECEMBER 2010

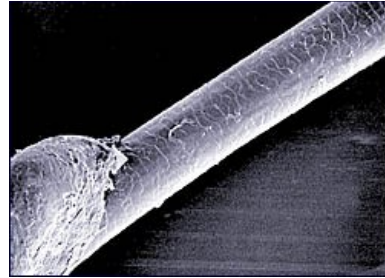


making science cool

This is a strand of hair magnified
138 times.

1 -How many strands of hair on
average do you think a person has:

- A - 100,000
- B - 300,000
- C - 50,000



Did you know that a single strand of hair can support 100 grams in weight.—The combined hair of a whole head could support 12 tons

2 - How fast do you think a hair on your head grows:

- A - approx 50 mm a month
- B - approx 12 mm a month
- C - approx 100 mm a month

Check out the answers on the physics page at
www.westgatescienceclub.org.uk

When your hair is wet it can increase its length by approx 30% and then return to normal after it's dried. Your hair is made of keratin, the same ingredient as your fingernails. Keratin is a type of protein generated by your body's stem cells.

Hair is actually dead material when it leaves its root - otherwise it would hurt very much when your hairdresser cuts with their scissors. Each strand of hair is pushed up out of the skin by the follicles below that are alive.



Even on a good day, everyone loses at least 40 to 100 strands.

1. The Dead Sea is so dense with salt you cannot sink
TRUE/FALSE ?
2. The deepest location on earth is Marian Trench in the North Pacific Ocean. What is the depth: A = 6 km, B = 15 km , C = 11 km ?
3. How many volts in an AA battery
4. How many volts in an AAA battery
5. How many volts in a PP3 battery
6. How many volts in a D battery
7. How many volts in a C battery
8. What are the big pylons that carry lots of wires crossing the countryside for ?
9. When we switch on a light at home we are completing a.....of electricity. What is the missing word:
A - measure. B - circuit. C - surge D - power E - light



Check your answer on the physics page
at www.westgatescience.org.uk

The visit of the
Astro-Physics Group
from
Exeter University.



We discovered how
the difference in the
weight of planets vary,
some are heavy,
some are very light.

We made a
telescope!

What do we do at the
Westgate Science Club?



check it out on the
contacts page - see what experiments we've done so far

3 www.westgatescienceclub.org.uk

T R T S P T J L I R J P C T S
 T E E N I L O E U T V L R C R
 P X L D S A N B O A U L I P D
 G E N E N S N A B B P E D K K
 L S T R S I Y S D D N F R T Z
 U A X E M C P A G C D K O B T
 P V U O R G O L E W S B S H T
 T T A E E F E P M E P D E O N
 G N N T J N H T E S S R P B H
 E C I N A J R P Q T R R M K P
 F G H N A I Q D U G U I P R E
 S A R A H A O T X A T S X C S
 X M I O O W K B E T E K I M O
 Z I N I F B S A K E M L E D J
 Z A D K H A N E J D Q W Q L

CLUB
 JOSEPH
 PAUL
 SALT
 TELESCOPE

JANICE
 MIKE
 PETER
 SARAH
 TIM

JONNY
 NAOMI
 PINDER
 SCIENCE
 WESTGATE

Earth shortest/longest/highest/water

1. What day is the shortest in December?

--

2. Which point on earth has the longest day on December 21st ?

A = The North Pole, B = All points on the Equator. C = The South Pole ?

--

3. There is a day in the year where everywhere has the same length of day and night

TRUE/FALSE ?

--

4. What are the special colours that can be seen in the sky near the Arctic Circle (sometimes in Scotland)?

--

5. What is the height of the highest mountain Mount Everest:

A = 7,800 metres, B = 8,850 metres,

C = 8,580 metres

--

6. What is the percentage of water cover on the earth?

A = 71%, B = 65%, C = 75% ?

--

*Check out the answers on the physics page
at www.westgatescienceclub.org.uk*

MAGIC NUMBERS

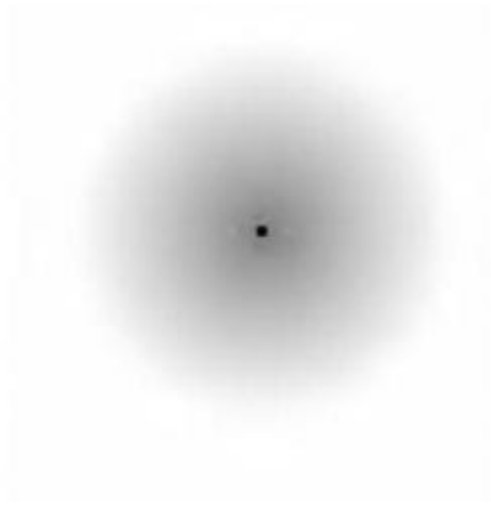
What so special about the following numbers:

9, 18, 27, 36, 45, 54, 63, 72, 81, 90

at least 2 special facts

Eye Tricks

Try staring at the dot in the centre of this image, after a time the grey area around the dot will seem to shrink and disappear.



WESTGATE SCIENCE CLUB

For dates, times & other events see website

The Science Club is held at the Westgate Church Building
(opposite The Picture House),
Bartholomew Street West, Exeter - EX4 3AJ

phone Mike Coles Exeter 253064
Naomi Patkai Exeter 466251
e mail westgatescienceclub@gmail.com

photos of our club on the website
lots of on-line puzzles



Making Science
Cool
for Primary School
Children
aged 7 yrs +

View slide show of our Opening on 10th September 2010.
See what experiments we did on other club evenings.

at www.westgatescienceclub.org.uk
Slide show and photos on the 'contacts' page

On a clear night have a look outside and see what looks like a bright 'star' towards the South approx half way up in the sky. Actually this isn't a star it's the planet **JUPITER** shining brightly. Jupiter has many moons but 4 are bright. Through a good pair of binoculars or a small telescope it would look like this, though the moons may be in a different position.



ISS - the International Space Station - Looks like a very bright moving star. Often you can view this in the sky over Exeter.



Go to www.westgatescienceclub.org.uk the 'Astronomy' page for the dates and times to view. & see **The ISS**.

**** see it from EXETER**

Best dates to observe the moon this month is from 10th to 16th Dec.

check these out...

1. Why do birds fly south in the winter?
2. What is black and white, black and white, black and white?
3. What do you call a sleeping bull ?
4. What time do ducks get up?
5. Why is number six afraid of number 7 ?
6. Why did the jelly baby go to school ?

The Water/Hydrogen Experiment we did....

7. What gas did we produce most of when we split water ?
8. What did we put in the water to help the experiment ?
9. What voltage did we put into the water ?
10. What metal did the bubbles come from ?

Check the answers on the physics page at
8 www.westgatescienceclub.org.uk